

Structurally Bolted Glass Cubes:

Product:

Structurally bolted assembly forming a 2, 3 or 4 sided 'all glass' draught lobby in lieu of revolving doors or traditional lobbies.

Utilised as an architectural feature and engineered to work with minimal framing, glass cubes are aesthetically pleasing; cost efficient and bespoke designed to highlight and create an entrance feature.

Casu Experience:

As a market leader in Structurally Bolted Assemblies, Casu Consulto Limited has vast experience in the design, supply and installation of feature entrance lobbies, or glass cubes. We have created striking entrance systems in monolithic, curved and double glazed solutions, utilising either steel or glass supports. We are able to offer a 'one stop shop' for the entire glass cube, including support structure (steel or glass beams) and doors.

Scope:

Casu Consulto Limited utilise our own system to create these glass cubes, engineering the glass and bolts to be supported via Steel or glass beams by Casu.

We can offer automated or manual entrance doors incorporating (if required) stainless steel 'goal post' type supports or engineered glass beams.

Glass can be toughened / laminated / digitally printed and is engineered to all relevant British Standards.

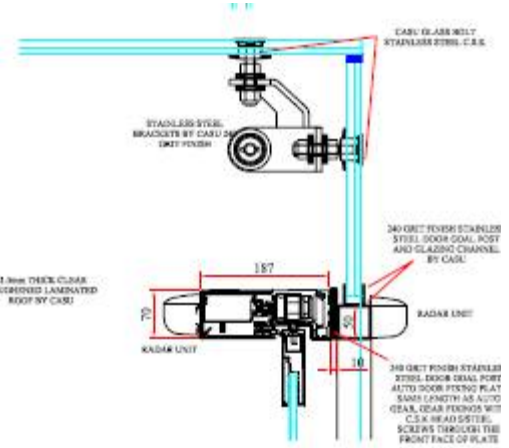
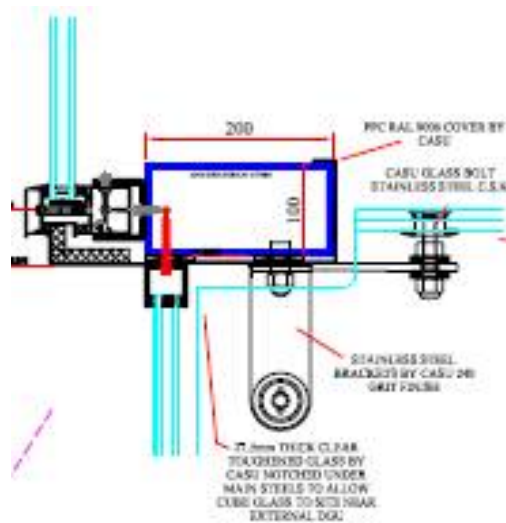
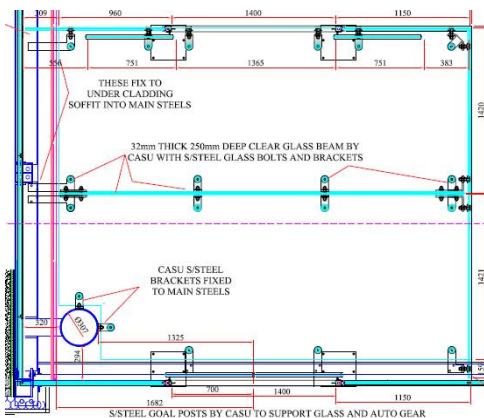
Clients:

Casu Consulto Limited has delivered works of this nature for the likes of Wates, Porsche, Marriott Hotels and many more.

Please see Project Examples below:



Porsche Showroom - Solihull:

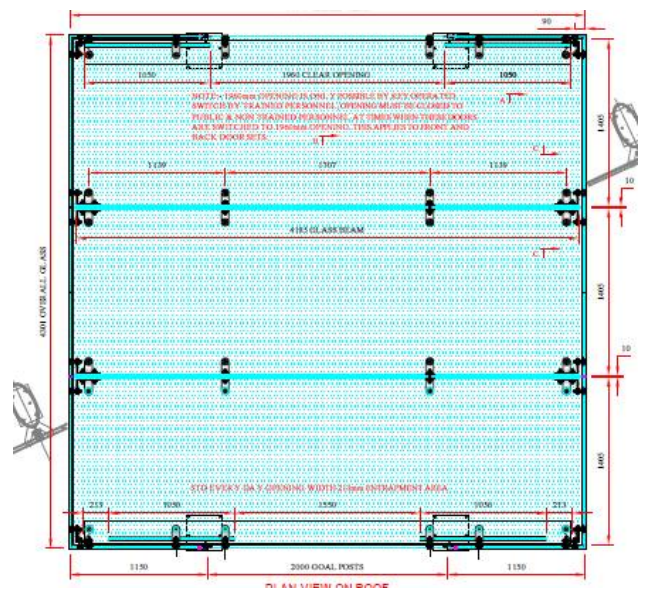


Casu Consulto Limited

REGISTERED IN ENGLAND & WALES No. 4726855
 REGISTERED OFFICE: 6 WEST PARK, CLIFTON, BRISTOL, BS8 2LT
 VAT REGISTRATION No: 811 0173 86



Brooke Drive - Cambridge:



Casu Consulto Limited

REGISTERED IN ENGLAND & WALES No. 4726855
 REGISTERED OFFICE: 6 WEST PARK, CLIFTON, BRISTOL, BS8 2LT
 VAT REGISTRATION No: 811 0173 86



Contact Details:

ADDRESS:

Titan House 13 Station Road, Horsforth, Leeds, LS18 5PA

Tel: 0113 226 0102

Fax: 0113 226 0103

sales@casuconsulto.co.uk

WEB:

www.casuconsulto.co.uk

KEY CONTACT:

Daniel Holden

Business Development Manager

danielh@casuconsulto.co.uk / 07835 685 819 / 0113 226 0102

